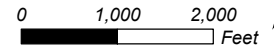
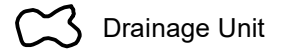


Snoqualmie Valley Relative Spring Surface Wetness

SCALE - 1:24,000



Legend



Drainage Unit

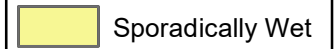


WID Parcel

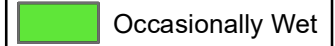


Drainage

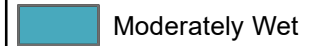
Wetness Index



Sporadically Wet



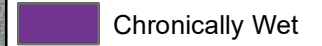
Occasionally Wet



Moderately Wet



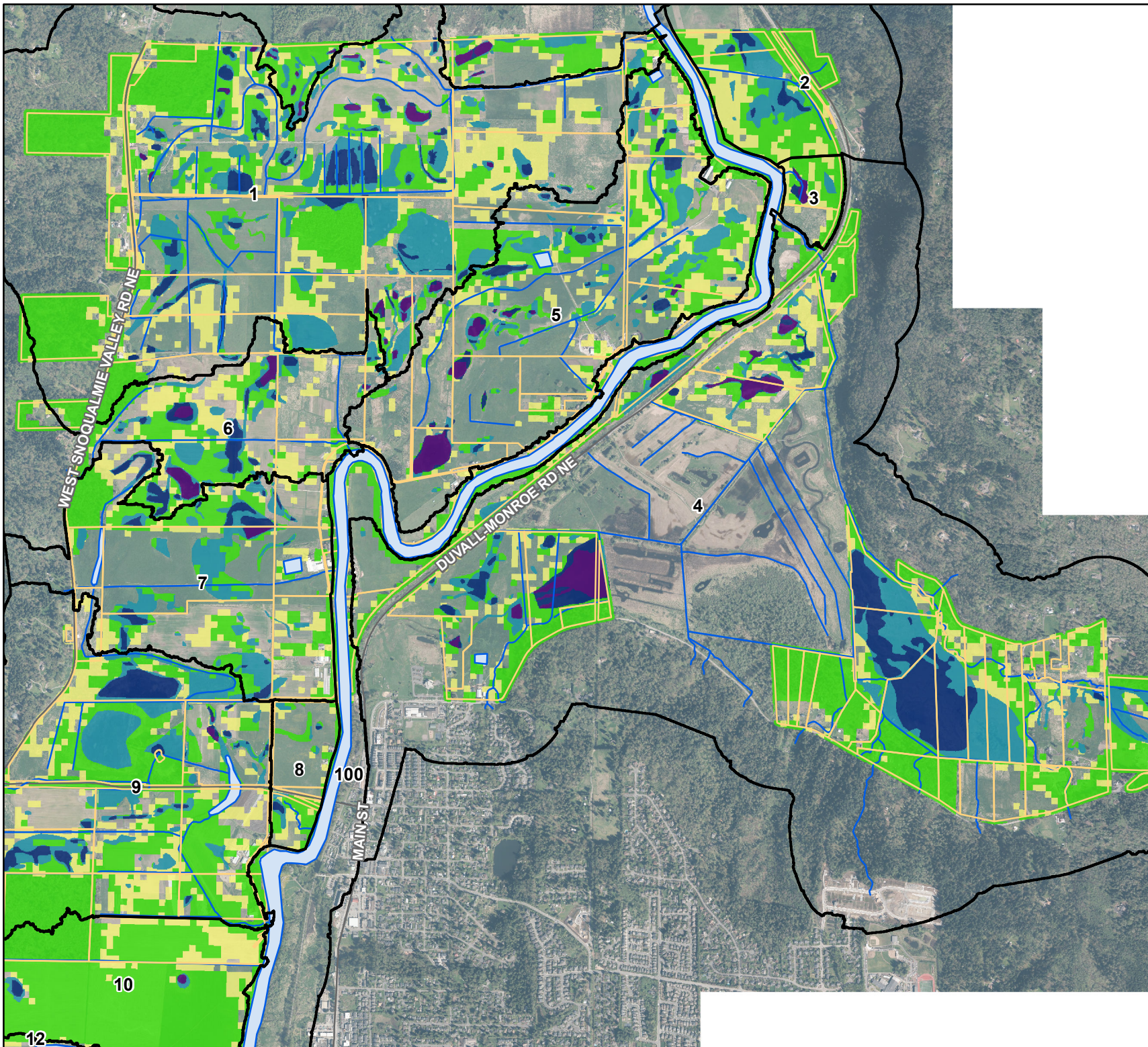
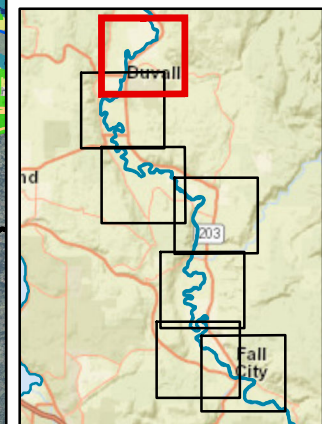
Very Wet



Chronically Wet

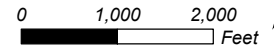
Notes: Wetness Index compiled from multiple remote sensing sources.

High resolution aerial imagery flown in April 2017.

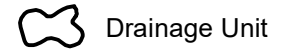


Snoqualmie Valley Relative Spring Surface Wetness

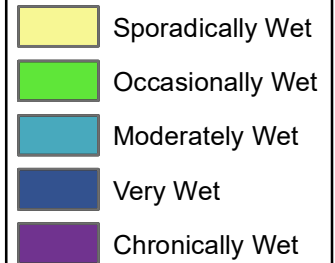
SCALE - 1:24,000



Legend

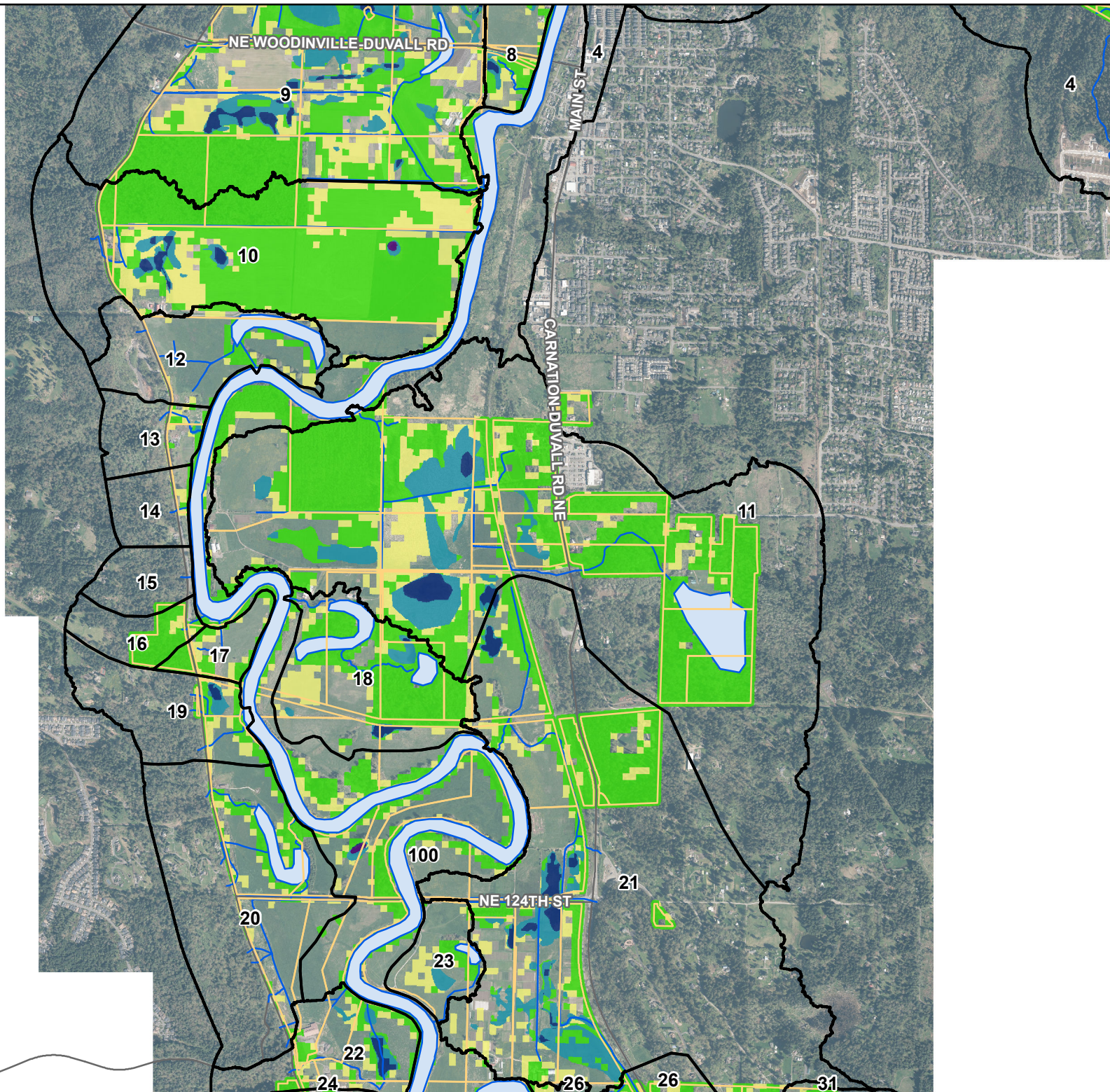
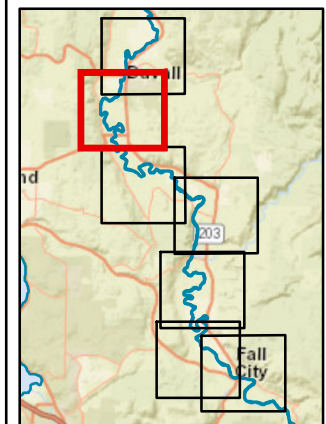


Wetness Index



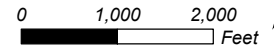
Notes: Wetness Index compiled from multiple remote sensing sources.

High resolution aerial imagery flown in April 2017.

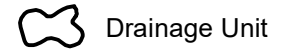


Snoqualmie Valley Relative Spring Surface Wetness

SCALE - 1:24,000



Legend



Drainage Unit



WID Parcel

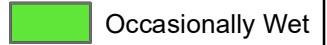


Drainage

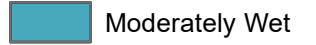
Wetness Index



Sporadically Wet



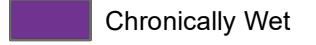
Occasionally Wet



Moderately Wet



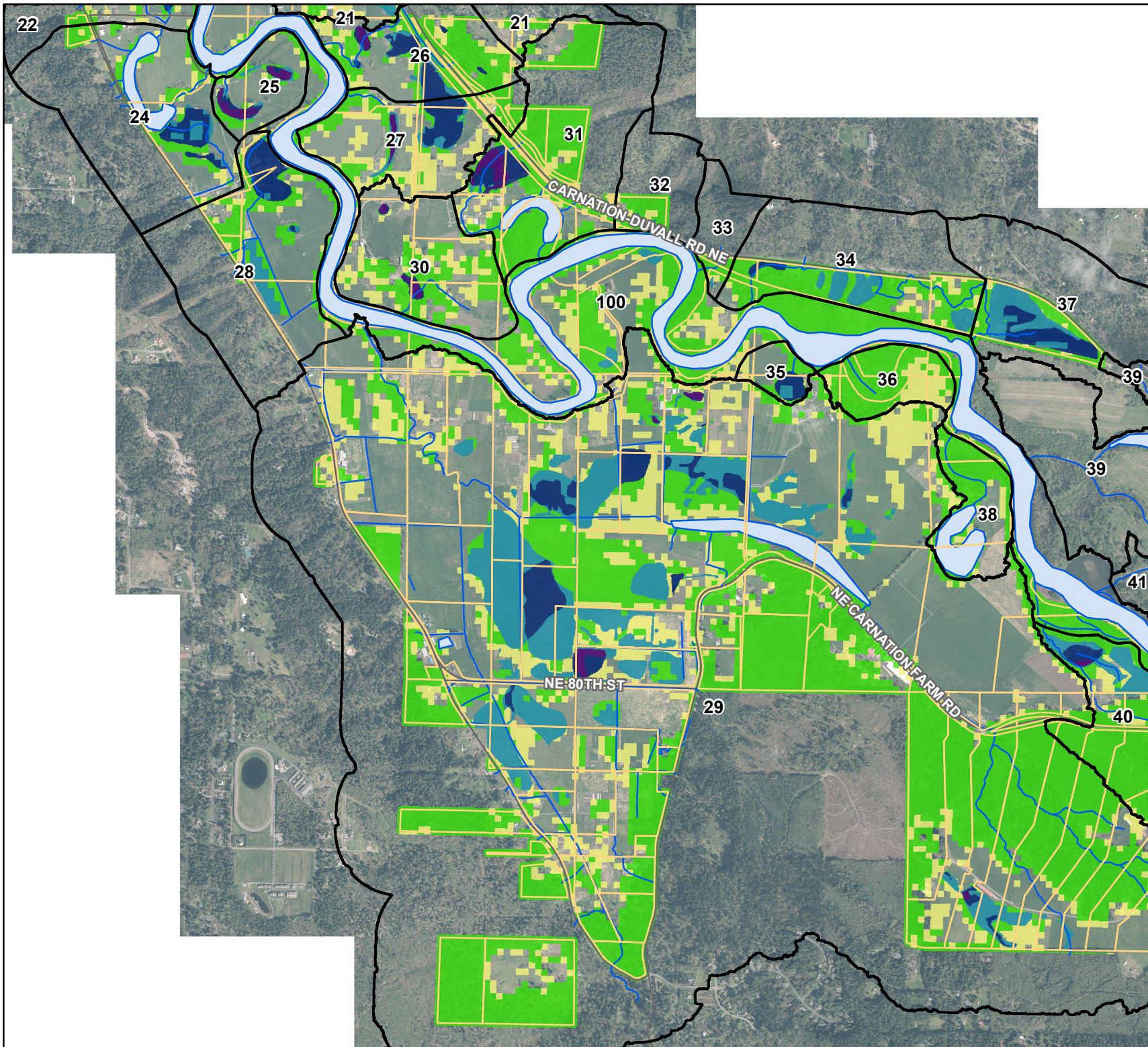
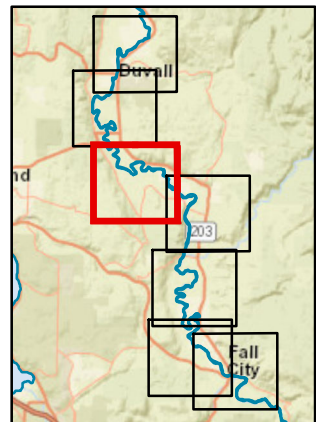
Very Wet



Chronically Wet

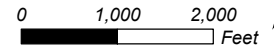
Notes: Wetness Index compiled from multiple remote sensing sources.

High resolution aerial imagery flown in April 2017.

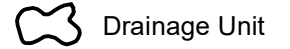


Snoqualmie Valley Relative Spring Surface Wetness

SCALE - 1:24,000



Legend



Drainage Unit

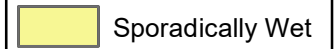


WID Parcel

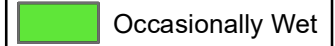


Drainage

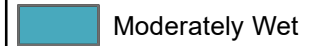
Wetness Index



Sporadically Wet



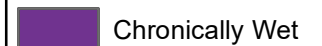
Occasionally Wet



Moderately Wet



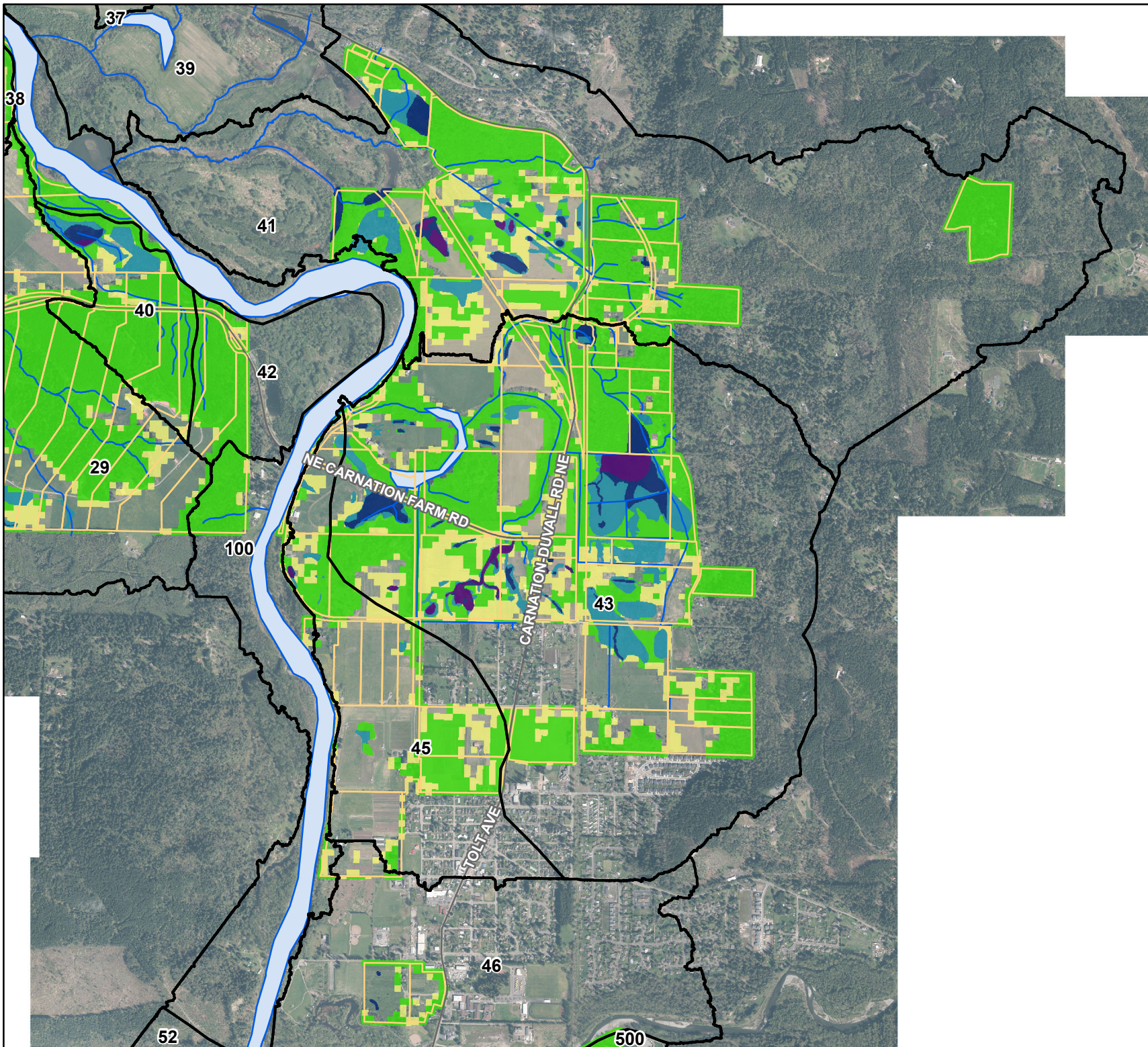
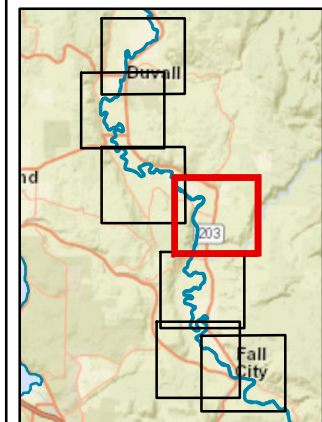
Very Wet



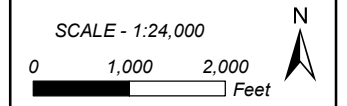
Chronically Wet

Notes: Wetness Index compiled from multiple remote sensing sources.

High resolution aerial imagery flown in April 2017.



Snoqualmie Valley Relative Spring Surface Wetness

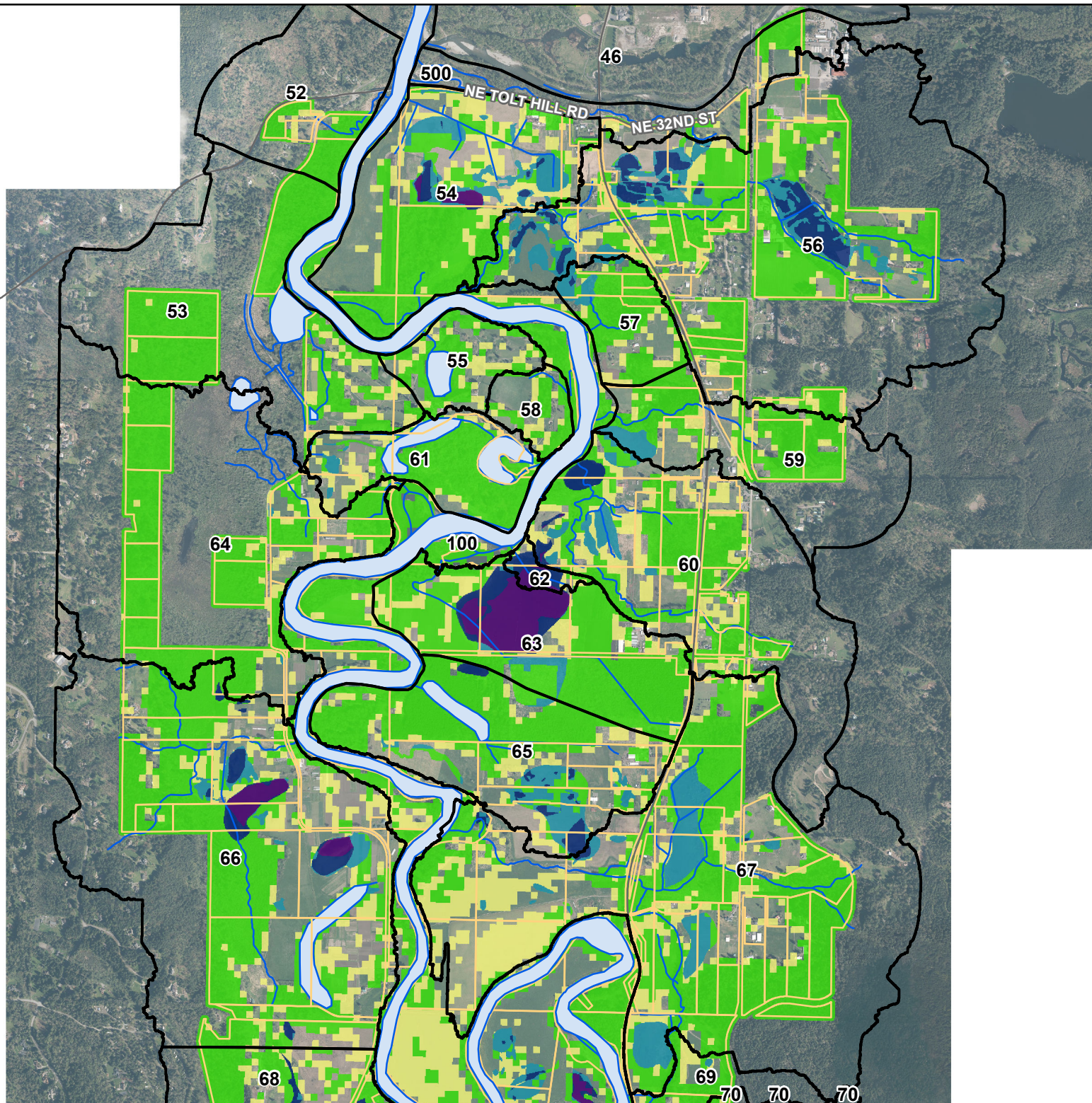
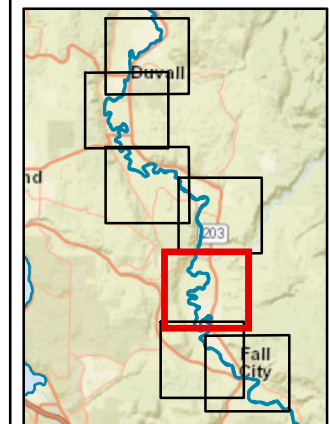


Legend

- Drainage Unit
- WID Parcel
- Drainage
- Wetness Index**
- Sporadically Wet
- Occasionally Wet
- Moderately Wet
- Very Wet
- Chronically Wet

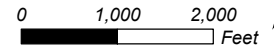
Notes: Wetness Index compiled from multiple remote sensing sources.

High resolution aerial imagery flown in April 2017.

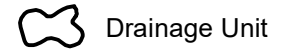


Snoqualmie Valley Relative Spring Surface Wetness

SCALE - 1:24,000



Legend



Drainage Unit

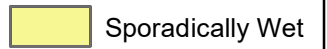


WID Parcel

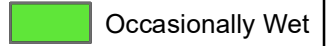


Drainage

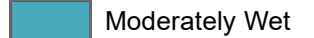
Wetness Index



Sporadically Wet



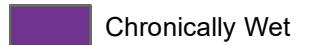
Occasionally Wet



Moderately Wet



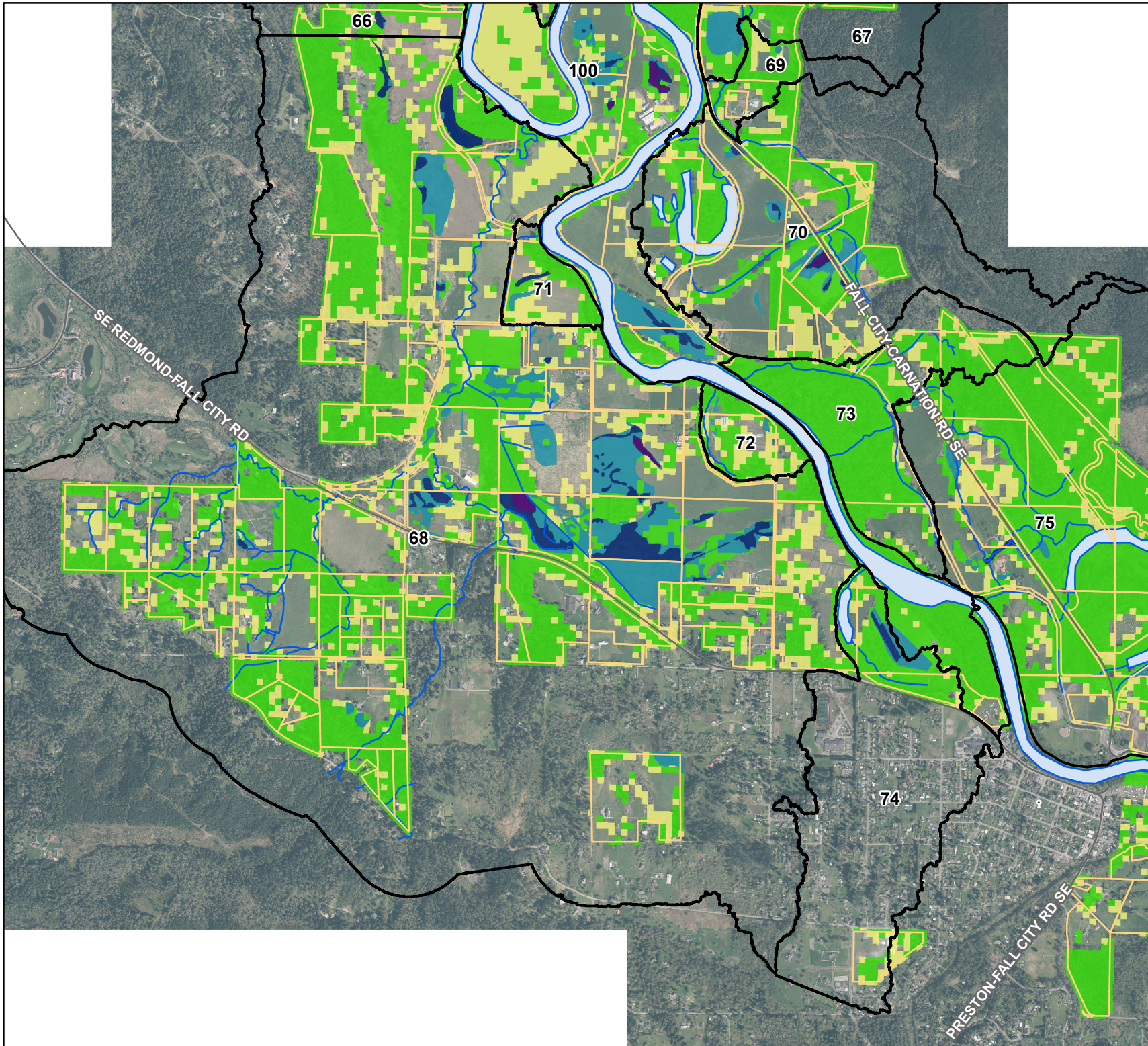
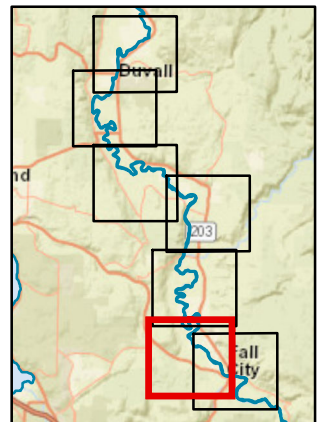
Very Wet



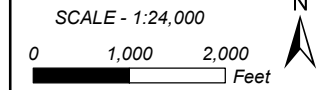
Chronically Wet

Notes: Wetness Index compiled from multiple remote sensing sources.

High resolution aerial imagery flown in April 2017.



Snoqualmie Valley Relative Spring Surface Wetness



Legend

- Drainage Unit
- WID Parcel
- Drainage

Wetness Index

- Sporadically Wet
- Occasionally Wet
- Moderately Wet
- Very Wet
- Chronically Wet

Notes: Wetness Index compiled from multiple remote sensing sources.

High resolution aerial imagery flown in April 2017.

