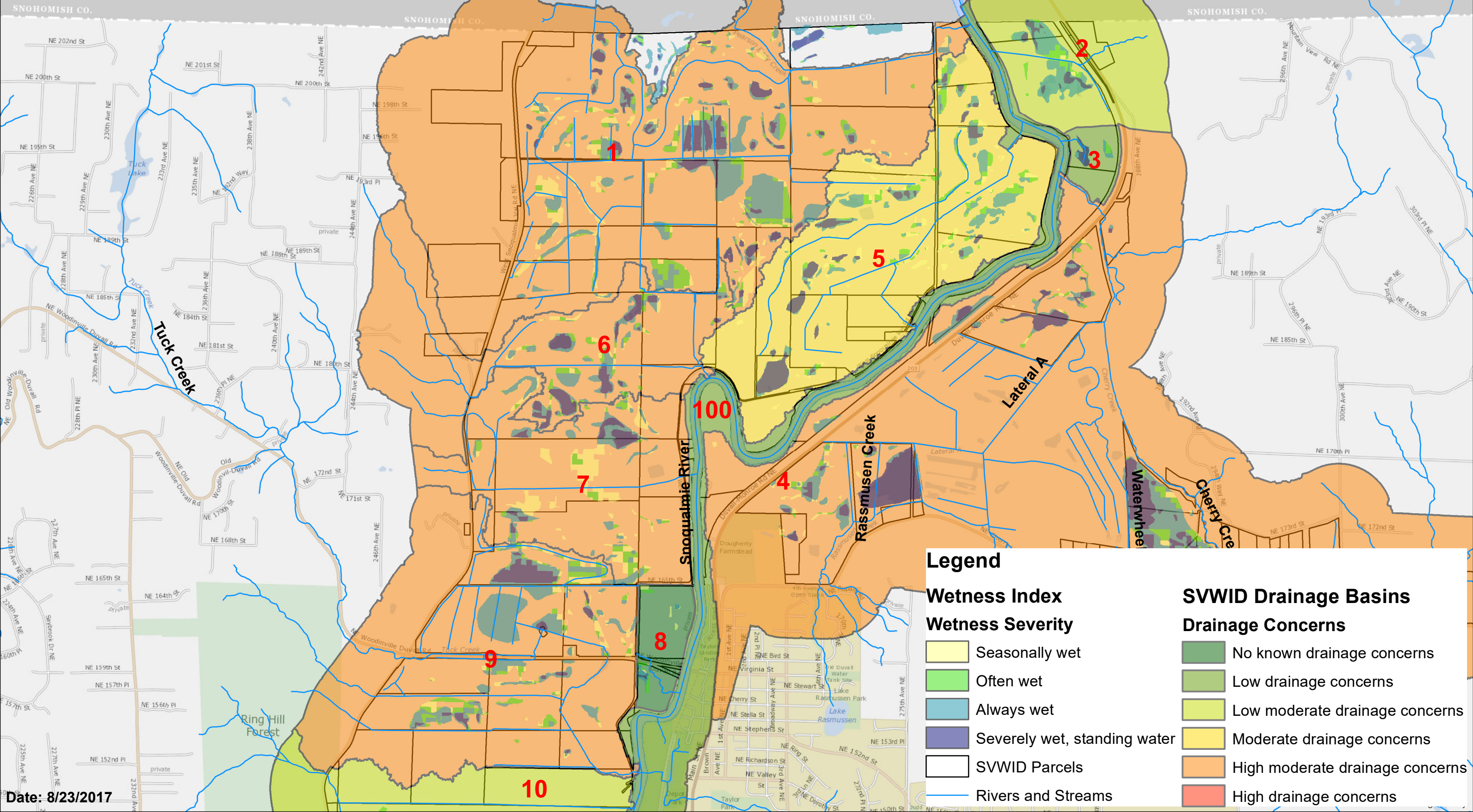




SNOQUALMIE VALLEY Watershed Improvement District



Layer Credits: Northwest Hydraulic Consultants, Drainage Basins and Wetness Index; King County GIS



Legend

Wetness Index Wetness Severity

- Seasonally wet
- Often wet
- Always wet
- Severely wet, standing water
- SVWID Parcels
- Rivers and Streams

SVWID Drainage Basins Drainage Concerns

- No known drainage concerns
- Low drainage concerns
- Low moderate drainage concerns
- Moderate drainage concerns
- High moderate drainage concerns
- High drainage concerns

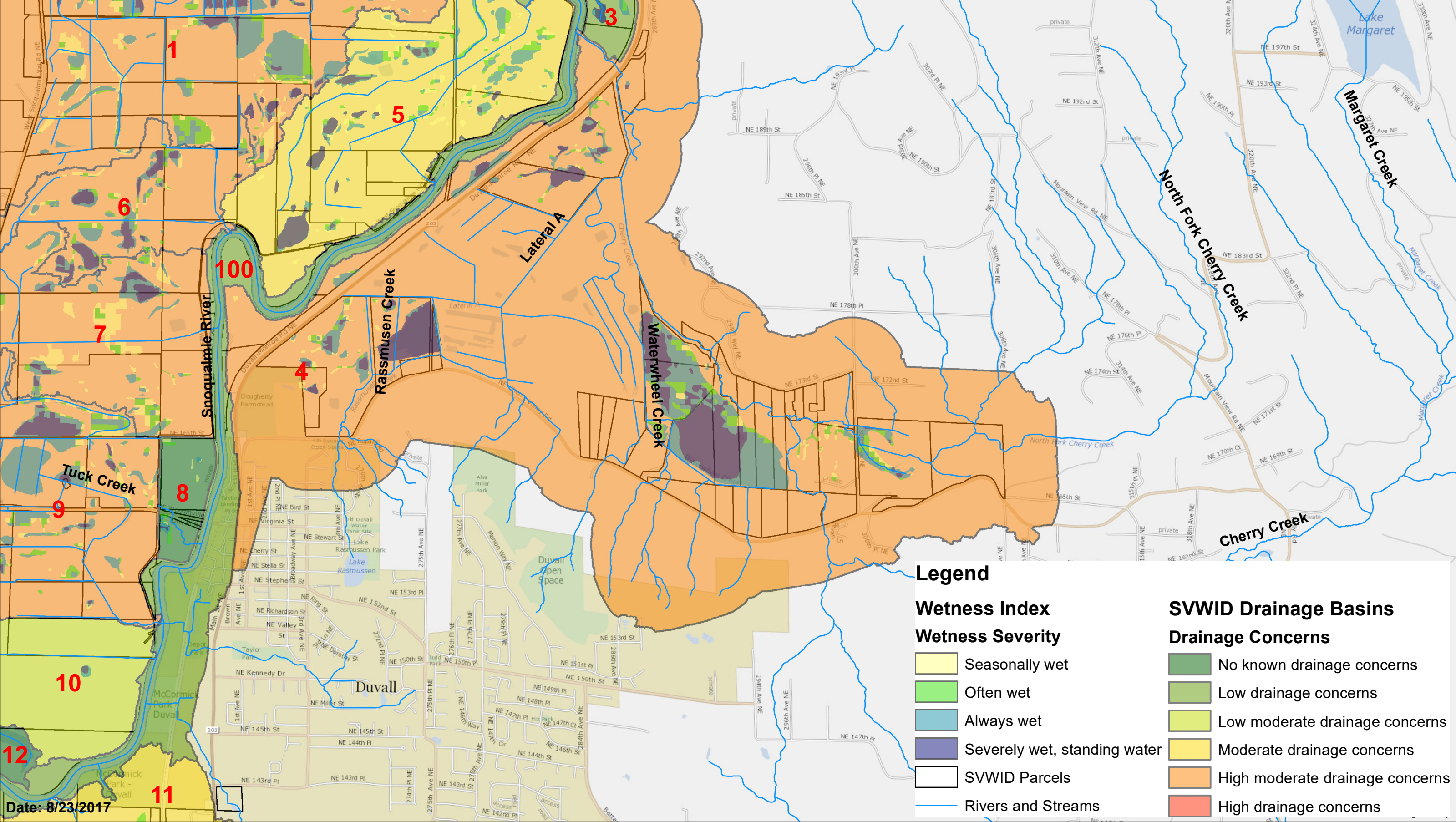
Date: 8/23/2017



SNOQUALMIE VALLEY Watershed Improvement District








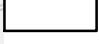
Layer Credits: Northwest Hydraulic Consultants, Drainage Basins and Wetness Index; King County GIS



Legend

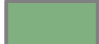





Wetness Index

Wetness Severity

-  Seasonally wet
-  Often wet
-  Always wet
-  Severely wet, standing water
-  SVWID Parcels
-  Rivers and Streams

SVWID Drainage Basins

Drainage Concerns

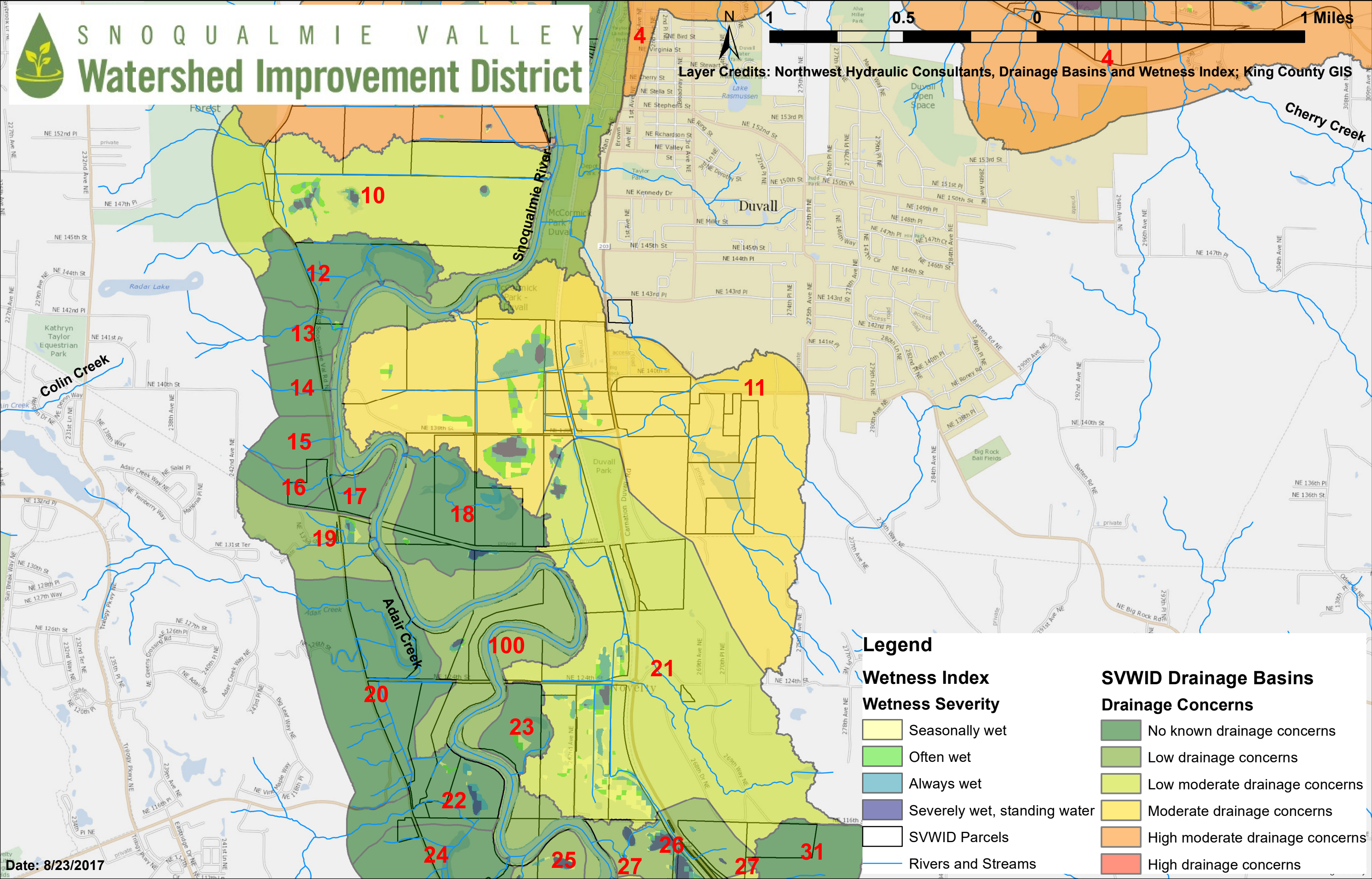
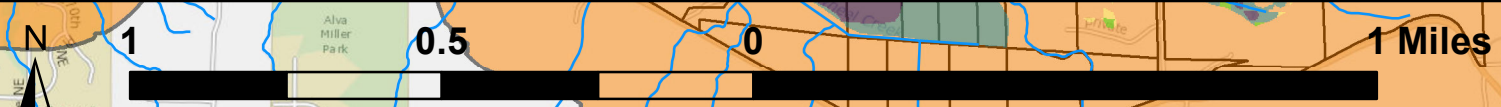
-  No known drainage concerns
-  Low drainage concerns
-  Low moderate drainage concerns
-  Moderate drainage concerns
-  High moderate drainage concerns
-  High drainage concerns

Date: 8/23/2017



SNOQUALMIE VALLEY Watershed Improvement District

Layer Credits: Northwest Hydraulic Consultants, Drainage Basins and Wetness Index; King County GIS



Legend

Wetness Index

Wetness Severity

- Seasonally wet
- Often wet
- Always wet
- Severely wet, standing water

SVWID Parcels

Rivers and Streams

SVWID Drainage Basins

Drainage Concerns

- No known drainage concerns
- Low drainage concerns
- Low moderate drainage concerns
- Moderate drainage concerns
- High moderate drainage concerns
- High drainage concerns

Date: 8/23/2017

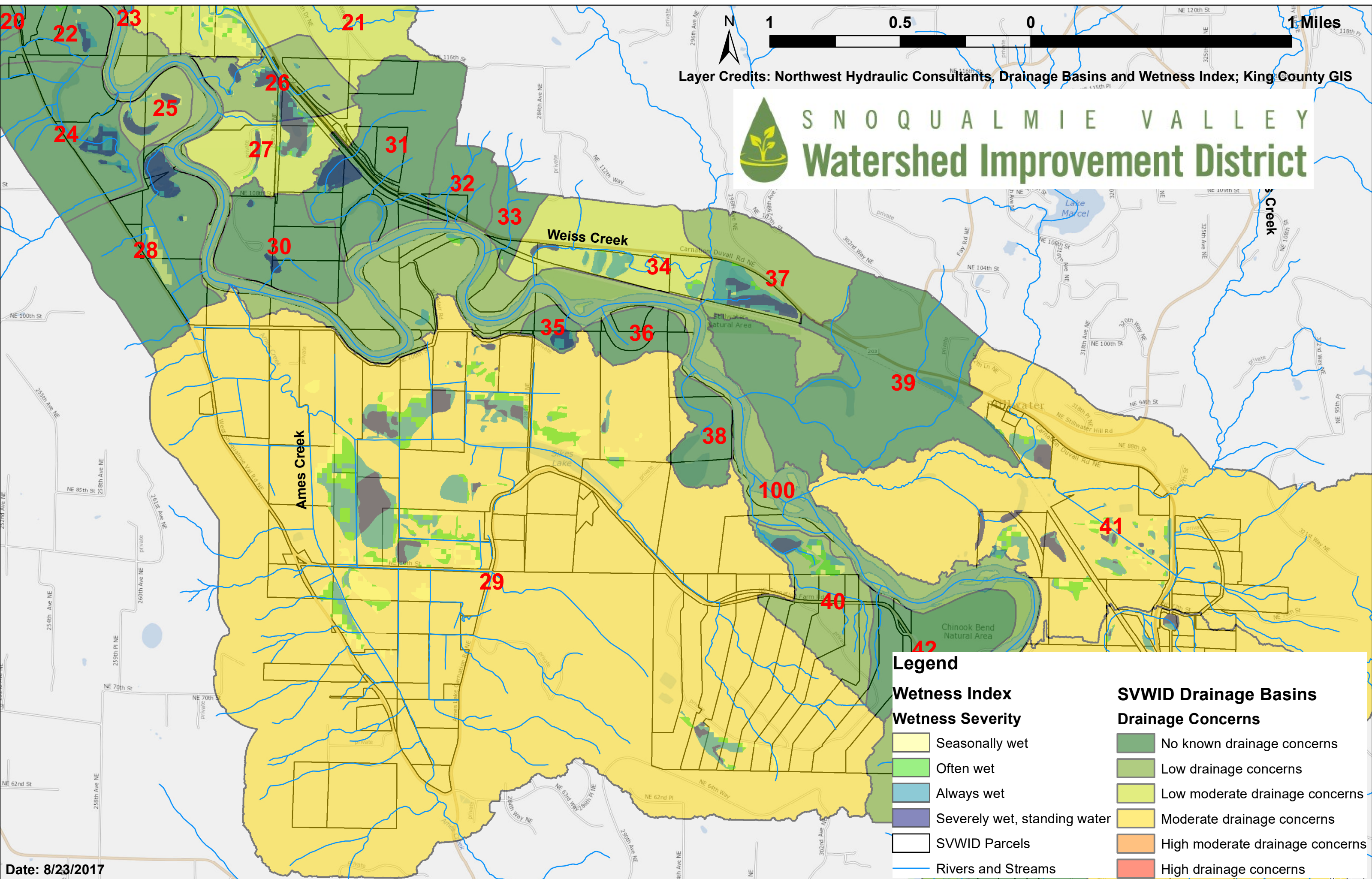
1 Miles



Layer Credits: Northwest Hydraulic Consultants, Drainage Basins and Wetness Index; King County GIS



SNOQUALMIE VALLEY Watershed Improvement District



Legend

Wetness Index

Wetness Severity

- Seasonally wet
- Often wet
- Always wet
- Severely wet, standing water
- SWVID Parcels
- Rivers and Streams

SVWID Drainage Basins

Drainage Concerns

- No known drainage concerns
- Low drainage concerns
- Low moderate drainage concerns
- Moderate drainage concerns
- High moderate drainage concerns
- High drainage concerns

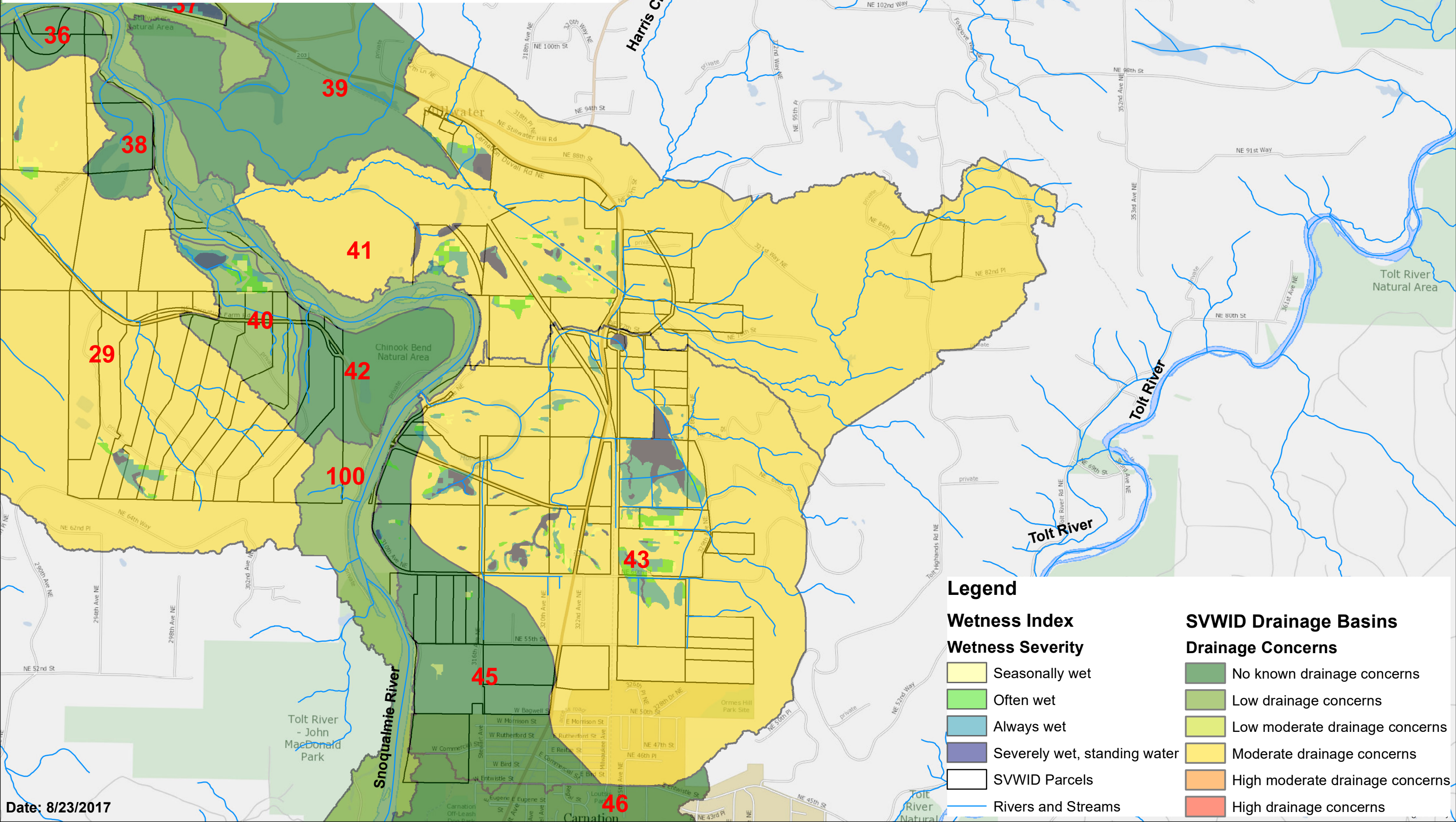
Date: 8/23/2017



SNOQUALMIE VALLEY Watershed Improvement District

1 0.5 0 1 Miles

Layer Credits: Northwest Hydraulic Consultants, Drainage Basins and Wetness Index; King County GIS



Legend

Wetness Index

Wetness Severity

- Seasonally wet
- Often wet
- Always wet
- Severely wet, standing water
- SWVID Parcels
- Rivers and Streams

SVWID Drainage Basins

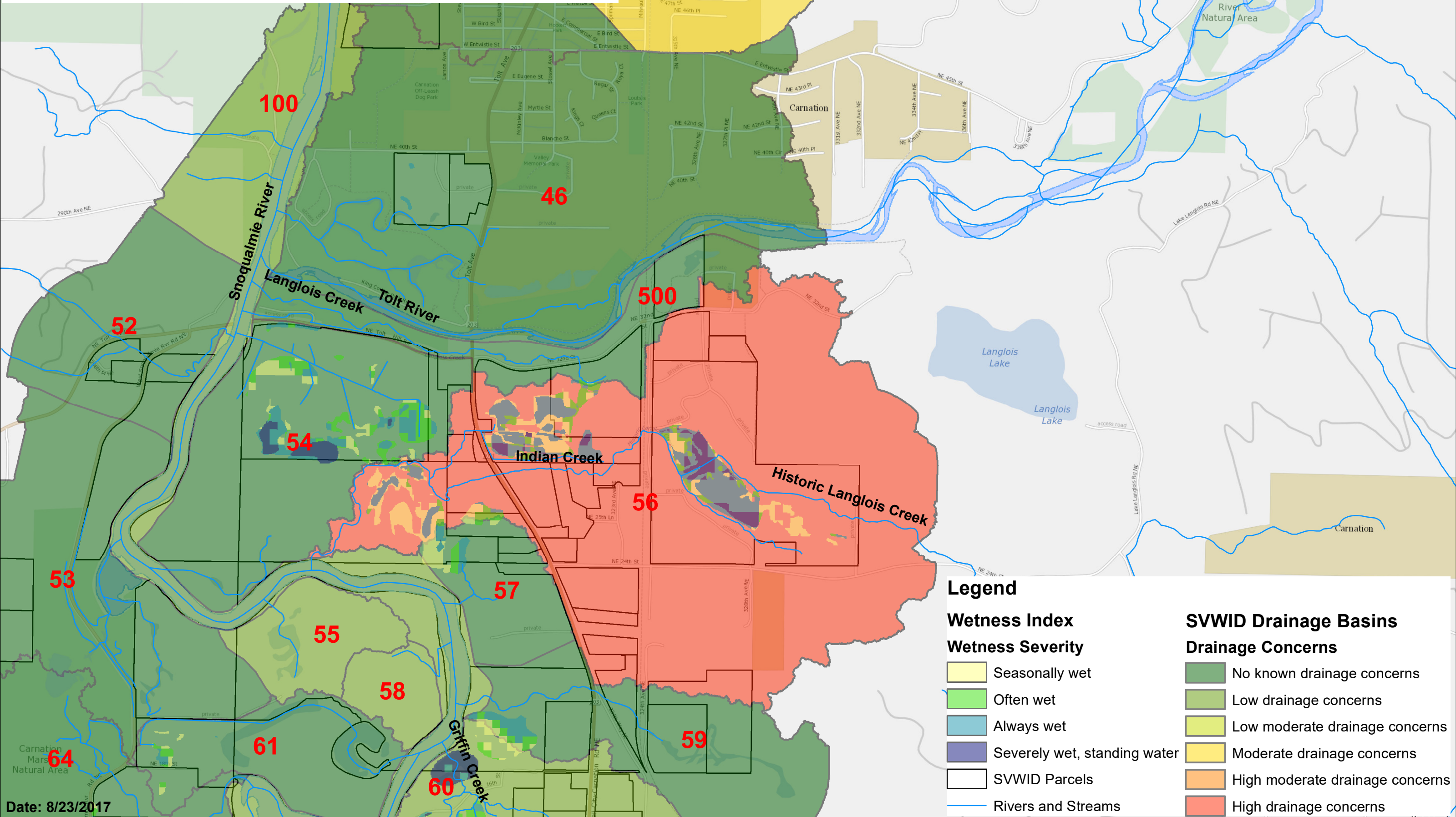
Drainage Concerns

- No known drainage concerns
- Low drainage concerns
- Low moderate drainage concerns
- Moderate drainage concerns
- High moderate drainage concerns
- High drainage concerns



SNOQUALMIE VALLEY Watershed Improvement District

43 Layer Credits: Northwest Hydraulic Consultants, Drainage Basins and Wetness Index; King County GIS



Legend

Wetness Index

Wetness Severity

- Seasonally wet
- Often wet
- Always wet
- Severely wet, standing water

SWVID Parcels

Rivers and Streams

SVWID Drainage Basins

Drainage Concerns

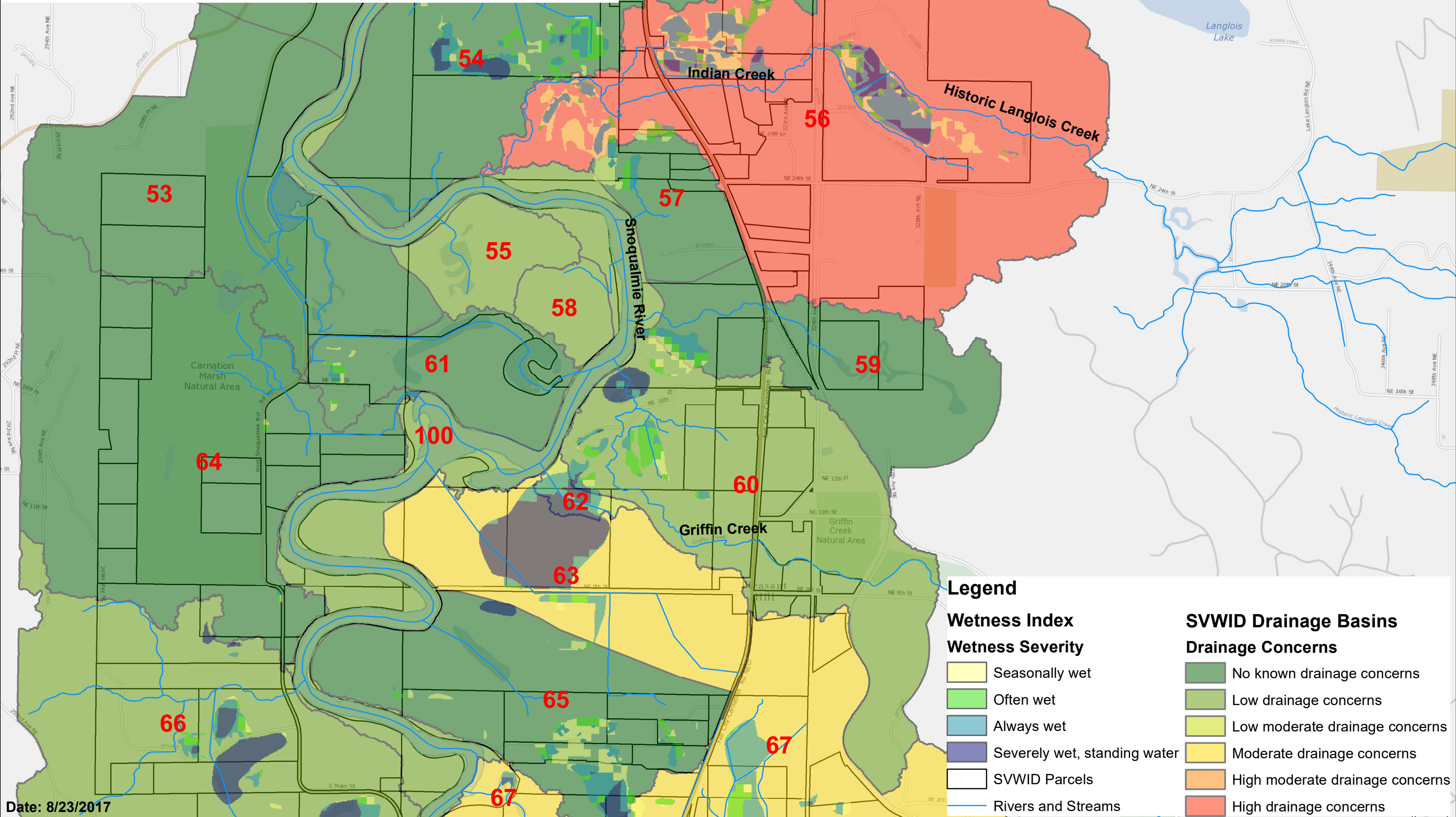
- No known drainage concerns
- Low drainage concerns
- Low moderate drainage concerns
- Moderate drainage concerns
- High moderate drainage concerns
- High drainage concerns



SNOQUALMIE VALLEY Watershed Improvement District

0.65 0.325 0 0.65 Miles

Layer Credits: Northwest Hydraulic Consultants, Drainage Basins and Wetness Index; King County GIS



Legend

Wetness Index

Wetness Severity

- Seasonally wet
- Often wet
- Always wet
- Severely wet, standing water

SWVID Parcels

Rivers and Streams

SVWID Drainage Basins

Drainage Concerns

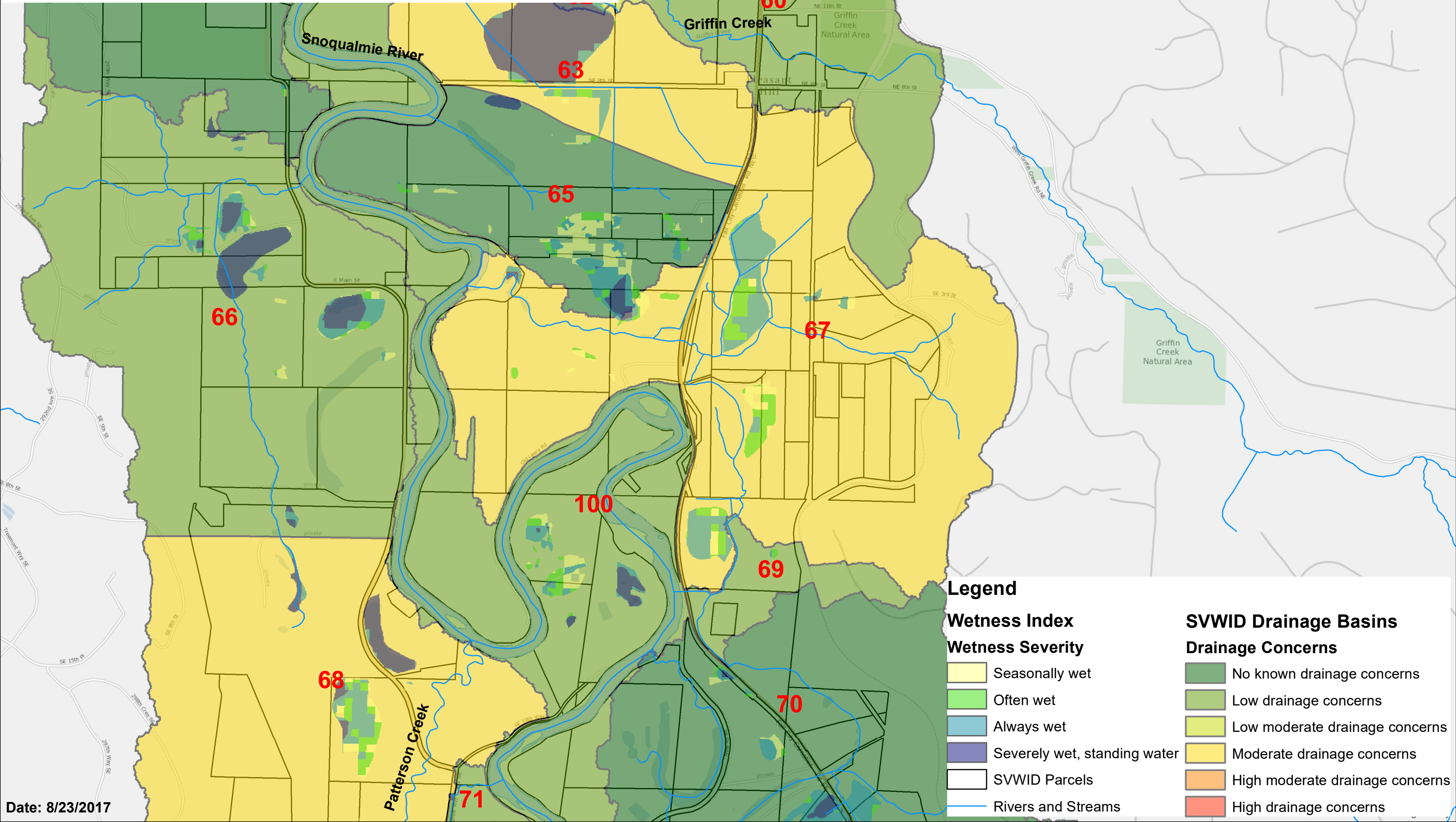
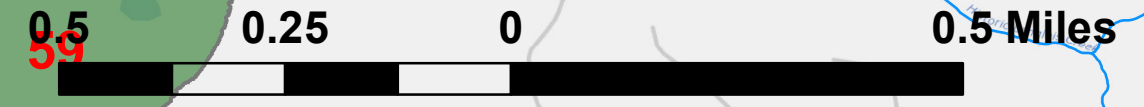
- No known drainage concerns
- Low drainage concerns
- Low moderate drainage concerns
- Moderate drainage concerns
- High moderate drainage concerns
- High drainage concerns

Date: 8/23/2017



SNOQUALMIE VALLEY Watershed Improvement District

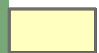



Layer Credits: Northwest Hydraulic Consultants, Drainage Basins and Wetness Index; King County GIS



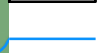
Legend

Wetness Index

Wetness Severity







-  Seasonally wet
-  Often wet
-  Always wet
-  Severely wet, standing water

 SVWID Parcels

 Rivers and Streams

SVWID Drainage Basins

Drainage Concerns

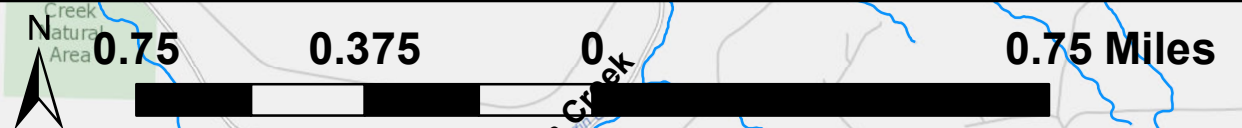
-  No known drainage concerns
-  Low drainage concerns
-  Low moderate drainage concerns
-  Moderate drainage concerns
-  High moderate drainage concerns
-  High drainage concerns

Date: 8/23/2017



SNOQUALMIE VALLEY Watershed Improvement District

Layer Credits: Northwest Hydraulic Consultants, Drainage Basins and Wetness Index; King County GIS



Legend

Wetness Index

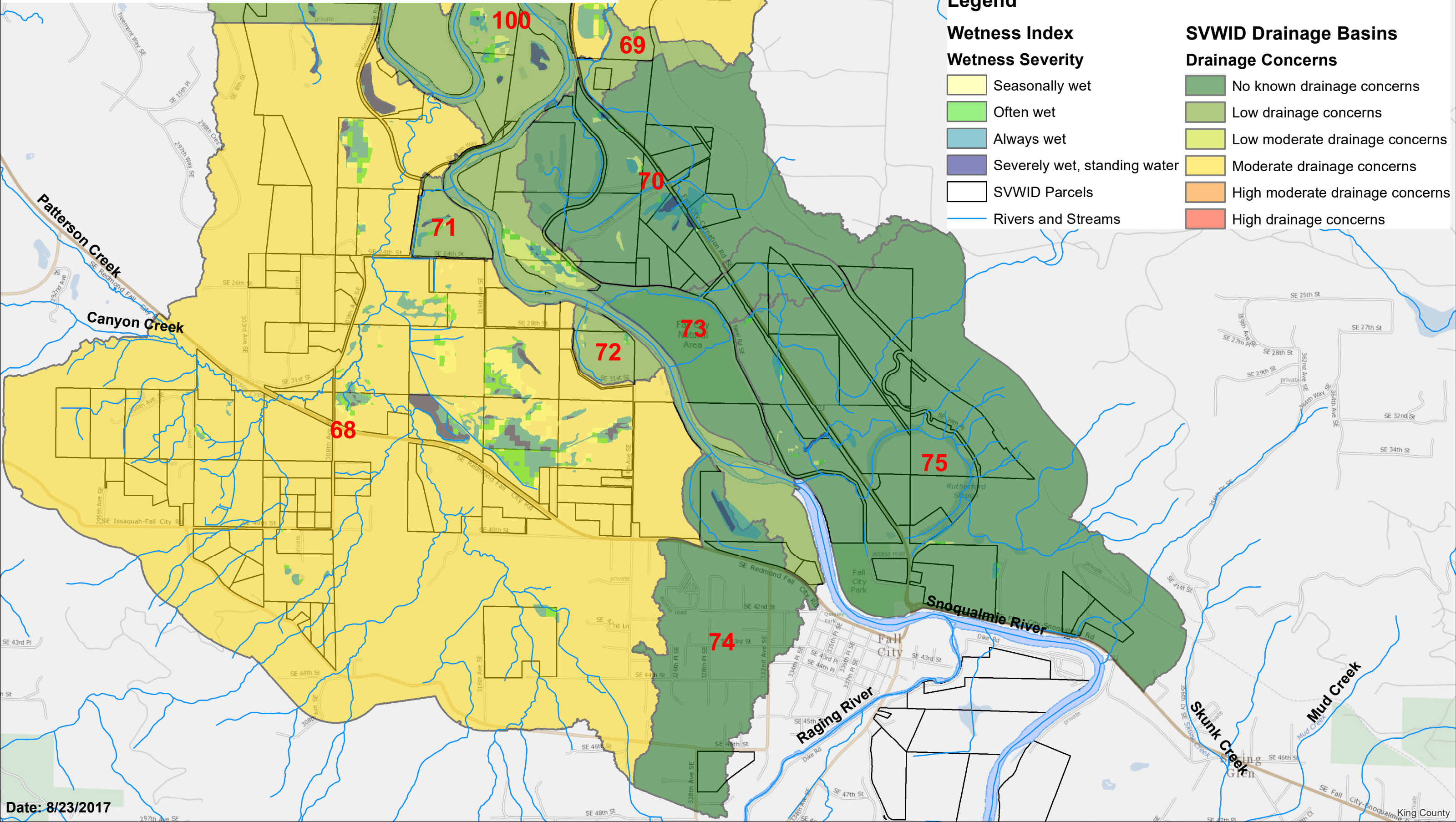
Wetness Severity

- Seasonally wet
- Often wet
- Always wet
- Severely wet, standing water
- SVWID Parcels
- Rivers and Streams

SVWID Drainage Basins

Drainage Concerns

- No known drainage concerns
- Low drainage concerns
- Low moderate drainage concerns
- Moderate drainage concerns
- High moderate drainage concerns
- High drainage concerns



Date: 8/23/2017

King County